

A man in a grey jacket is sitting on a metal table in a barn. He is looking at a white machine on the table. In the background, there are several brown cows in metal stalls. The floor is covered with straw. There are some bags of feed on the floor to the left.

Who cares what the rest of
the world is doing? I do!

Darrh Bullock
University of Kentucky



International
Genetic
Evaluations

Americas

ICAR/InterBeef (Ireland)

BreedPlan

Ireland

Data

- **Commercial/seedstock**
- **Recorders**

Traits

- **Traits that are not available in US**
- **Traits handled differently than US**

Indices

- **Terminal**
- **Replacement**

ICBF – Novel Traits

Mortality – stillborn or died within 5 days ($h^2 = 4\%$)

Calving Interval ($h^2 = 2.4\%$)

Age at First Calving

Structure

TB Resistance

Liver Fluke Resistance

ICBF – Traits Handled Differently

Docility

- Weanling
- Cow

Cow Weight ($r = .74$)

- Live Cow Weight
- Cull Cow Weight

Calving Difficulty

- Heifer/Cow
- Beef/Dairy

Calving Difficulty

Trait	h^2	Beef Heifer	Beef Cow	Dairy Heifer
Beef Heifer	17%			
Beef Cow	15%	.94		
Dairy Heifer	16%	.80	.62	
Dairy Cow	8%	.78	.59	.91

Australia

BreedPlan

BreedObject

- Indices – early adopters

MateSel

- Precision mating tool

BreedPlan – Novel Traits

Days to Calving

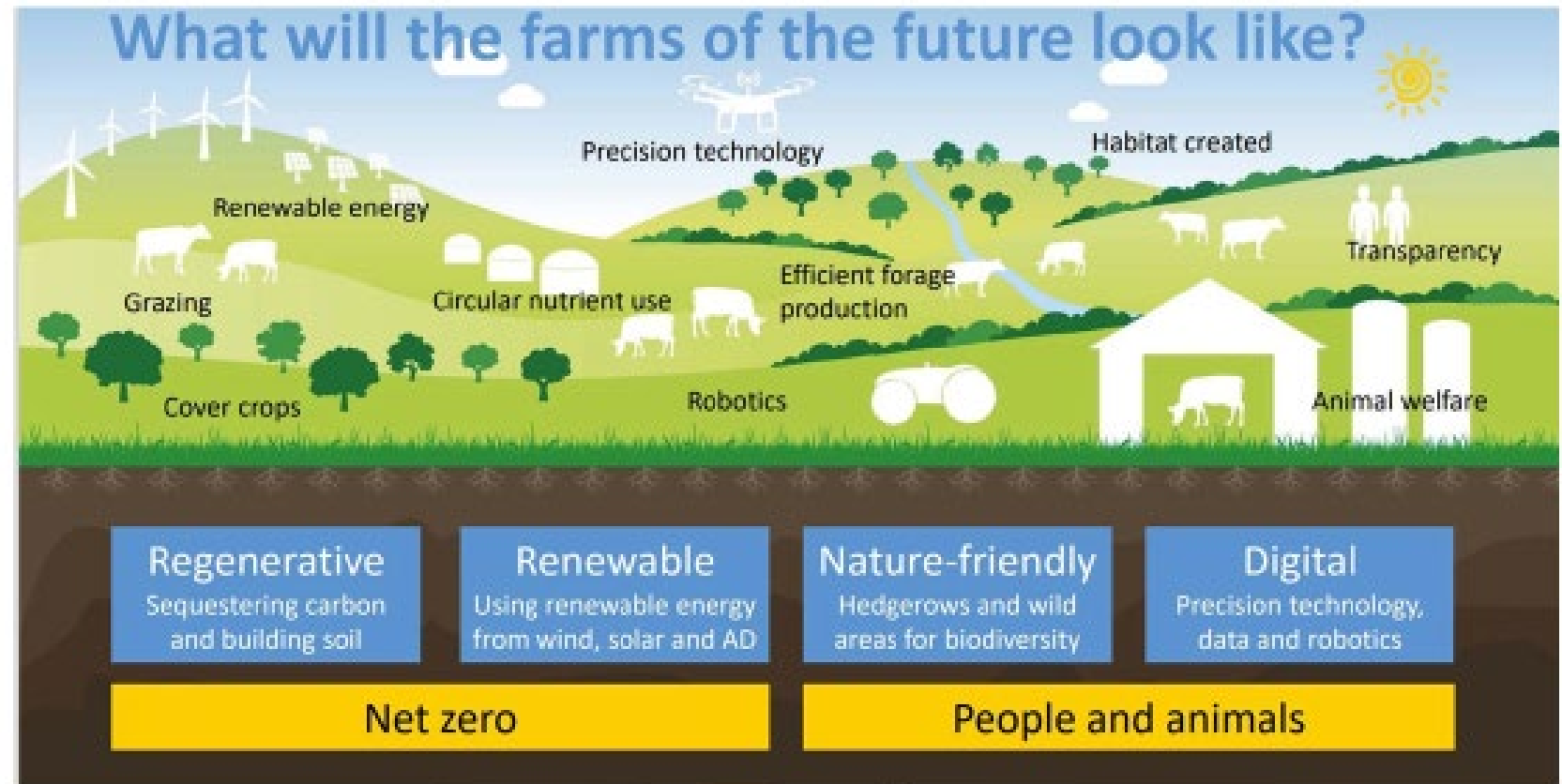
Percent Normal Sperm

Shear Force

Marble Fineness

Structural Soundness

ICAR/InterBeef



From:
ICAR Sustainability Task Force
Montreal May 2022
Tone Roalkvam, TINE, Norway
Ben Bartlett, NMR, UK



ICAR/InterBeef - Take Away Message

- **Sustainability is Dependent on Efficiency**
 - **Herd Efficiency**
 - **Reproduction**
 - **Health**
 - **Production Efficiency**
 - **Feed Conversion**
 - **Length of Production**



Closing Thoughts

Opportunities to learn through other's experiences

- Incorporation of commercial data
- Rethink how we handle traits

Industry/government support is critical to development of future traits

- World
 - Industry/Government funding



Closing Thoughts

Opportunities to learn through other's experiences

- Incorporation of commercial data
- Rethink how we handle traits

Industry/government support is critical to development of future traits

- World
 - Industry/Government funding
- US
 - Very limited industrywide funding
 - Very limited and targeted government funding
 - Extreme burden on the seedstock industry